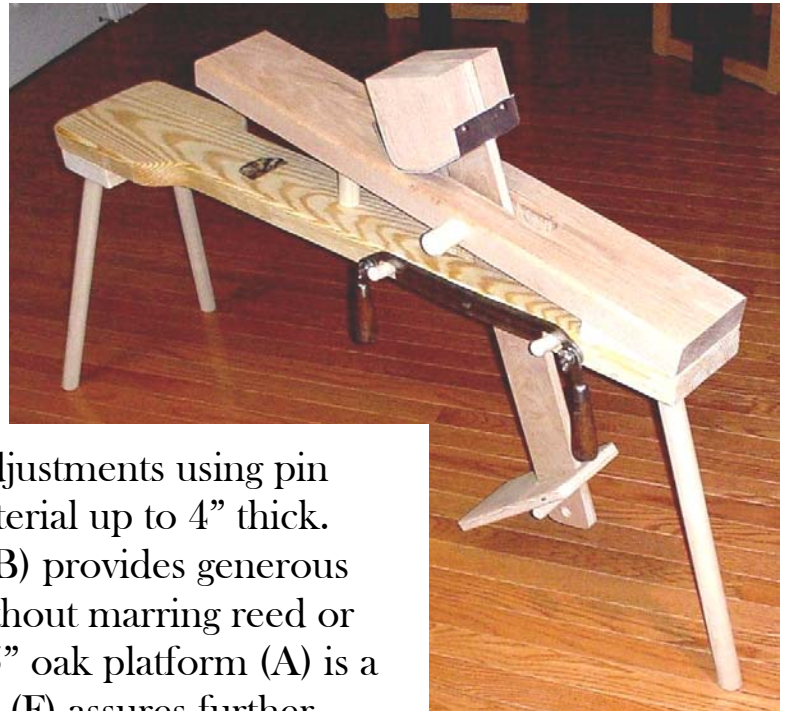


The Basket Maker's Friend

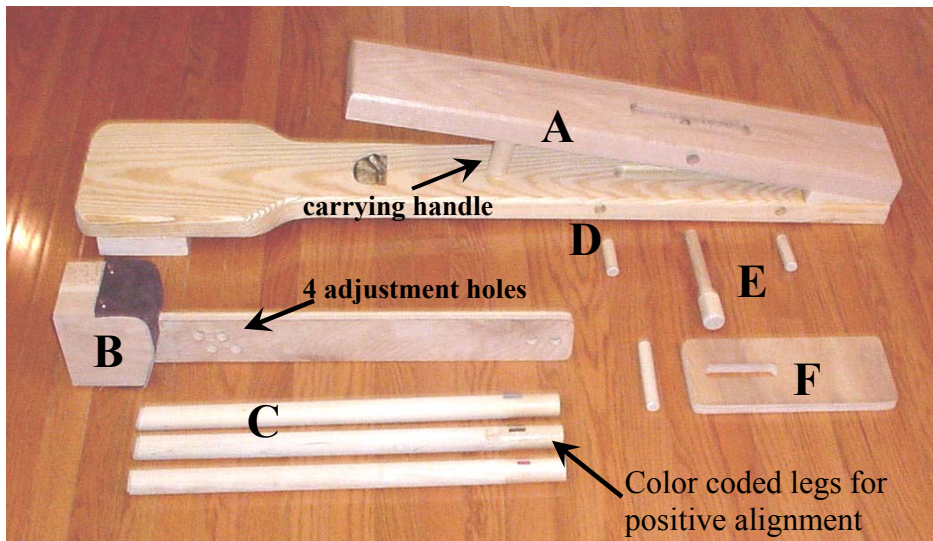
Proudly offered by:



This traditional well crafted shave horse mimics original Shaker style as developed by using the best of several



The clamp head (B) has four adjustments using pin (E) to suit personal size and material up to 4" thick. Suede covered oak headstock (B) provides generous radius to assure positive grip without marring reed or soft woods. Shaving on wide 5.5" oak platform (A) is a pleasure. Adjustable foot pedal (F) assures further



Easy disassembly w/ built-in handle (A) encourages a "take anywhere" attitude.

Conveniently located draw knife support pins (D) are spaced to fit most drawknife lengths (8-10").

MATERIALS: (All Natural Finish)
Kiln Dried Oak - Head Stock & Shave Board
Birch Cabinet Ply - Pivot & Foot Pedal
Yellow Pine - Seat Board
Poplar and Oak - Legs & Dowels
SIZE: 48"L x 9.5"W x 32"H **WT:** 27#
COST: \$260 (plus shipping)

Sturdy 1.25" legs (C) fit snugly into precision bored holes while wax burnishing and color coding at leg interface ensures easy assembly.

7 Covey Court
Greer, SC 29650
Phone (864) 879-7877
acre8shun@aol.com
www.aurorabaskets.com

Rev 08-30-04